



## SUMMARY OF TOITŪ CARBONREDUCE CERTIFICATION

### CHAPMAN TRIPP

Year 1 of 3-year certificate period



*Chapman Tripp meets the requirements of Toitū carbonreduce certification having measured its greenhouse gas emissions in accordance with ISO 14064-1:2006 and committed to managing and reducing its emissions in respect of the operational activities of its organisation.*

Chapman Tripp is a full-service commercial law firm offering a wide range of legal services to clients in New Zealand and internationally. The firm employs 398 people and has 54 partners (as at 30 November 2021) and has offices in Auckland, Christchurch and Wellington.

Being connected to our community and our environment is at the core of what we do at Chapman Tripp. Our community and sustainability strategy has four key focus areas: contributing to our community, giving back through pro bono work, working sustainably and being a responsible employer. As part of our commitment to being a sustainable business, we seek to operate in a sustainable manner, embedding the changes in behaviour and learnings that have led to reductions in our GHG emissions in recent years and identifying where further savings can be achieved.

This inventory reports into the Toitū carbonreduce programme. This inventory report will be used by Chapman Tripp to inform and ultimately further its sustainability goals, including as part of its membership of the Sustainable Business Council and, recently, the Net Zero Lawyers Alliance, and to monitor its progress against those goals.

## EMISSIONS SUMMARY<sup>1</sup>

Chapman Tripp's emissions for this year (1<sup>st</sup> December 2020 to 31<sup>st</sup> November 2021) were 342.80 tCO<sub>2</sub>e. The operational GHG emission sources included in this inventory are shown in Figure 1 below.

---

<sup>1</sup> **Disclaimer:** This Disclosure Statement is a summary of the verified information considered for certification and the certification decision. It should not be taken to represent the full submission for certification. Whilst every effort has been made to ensure that the information in this Disclosure Statement is accurate and complete, Enviro-Mark Solutions Limited (trading as Toitū Envirocare) does not, to the maximum extent permitted by law, give any warranty or guarantee relating to the accuracy or reliability of the information.

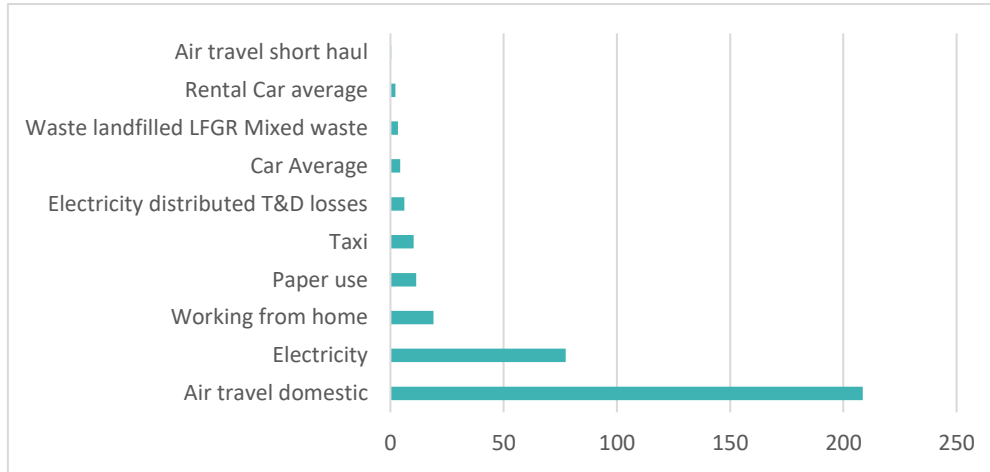


Figure 1: GHG emissions by emissions source

Emissions as tonnes of carbon dioxide equivalents (tCO<sub>2</sub>e) for this period were:

Scope	tCO <sub>2</sub> e
Scope 1	2.25
Scope 2	72.04
Scope 3 Mandatory	232.94
Scope 3 Additional	35.58
Scope 3 One time	0.00
<b>Total gross emissions</b>	<b>342.80</b>

## EMISSIONS REDUCTIONS

To reduce its emissions, Chapman Tripp has developed a GHG emissions management plan and reduction targets.

The organisation is committed to managing and reducing its emissions in accordance with the Programme requirements. Table 1 provides details of the emission reduction targets to be implemented. These are 'SMART' targets (specific, measurable, achievable, realistic, and time-constrained).

While we nominated a conservative emissions reduction target initially - that by the end of FY 2022 we wish to have achieved an overall and absolute emissions reduction of at least 3% against our base year – as we look to the completion of our fourth audit cycle, we have a better understanding of the levels of reduction we are capable of as an organisation. As a result, we are working on the development and formal adoption of a Net Zero target. Once new targets are set and formally adopted, our emissions management plan will be amended accordingly.

This is the 4th year of reporting under the Toitū carbonreduce programme. An absolute reduction in Scope 1 and 2 emissions of 59.29 tCO<sub>2</sub>e has been achieved against base year.

## EMISSIONS BOUNDARIES

The boundary for preparation of Chapman Tripp's GHG inventory is for its three offices. All business activities have been included.

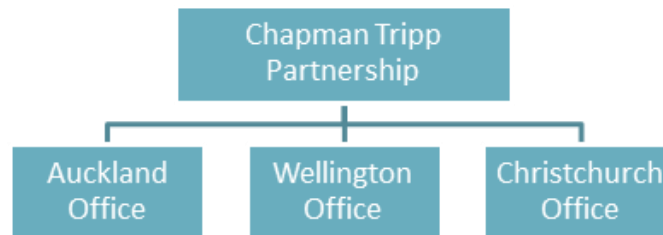


Figure 2: Organisational structure showing business units included and excluded

An operational control consolidation approach was used to account for emissions.

This is with reference to the methodology described in the GHG Protocol and ISO 14064-1:2006 standards.

The following emissions sources were excluded from the inventory for this measurement period:

- Freight has been excluded as we courier documents to clients which are very light in nature.
- Air conditioning as this is managed via our landlords.
- Document destruction bin data on the basis we measure paper purchased rather than documents destroyed (which would likely be a subset of the purchased amount).
- Transport to and from our records management supplier. We have sustainable procurement policies that mean that, while we don't count these emissions, we contract with suppliers who operate in a sustainable way.

Excluded emissions do not exceed 5% of the total footprint within the organisation boundary stated.

## CERTIFICATE DETAILS

*Certification status* – Carbonreduce certified organisation

*Certificate number* – 2022051J, Year 1 of 3-year certificate period

*Valid until* – 08 April 2025

*Measurement period* – 1<sup>st</sup> December 2020 to 31<sup>st</sup> November 2021

*Base year* – 01 December 2017 to 30 November 2018

*Verified by* – Enviro-Mark Solutions Limited

*Level of assurance* – Reasonable

*Data quality score* – High

Level 34, PwC Tower, 15 Customs Street West, Auckland  
Telephone: +64 9 357 9000. Email [greer.fredricson@chapmantripp.com](mailto:greer.fredricson@chapmantripp.com).  
Web: [chapmantripp.com](http://chapmantripp.com)